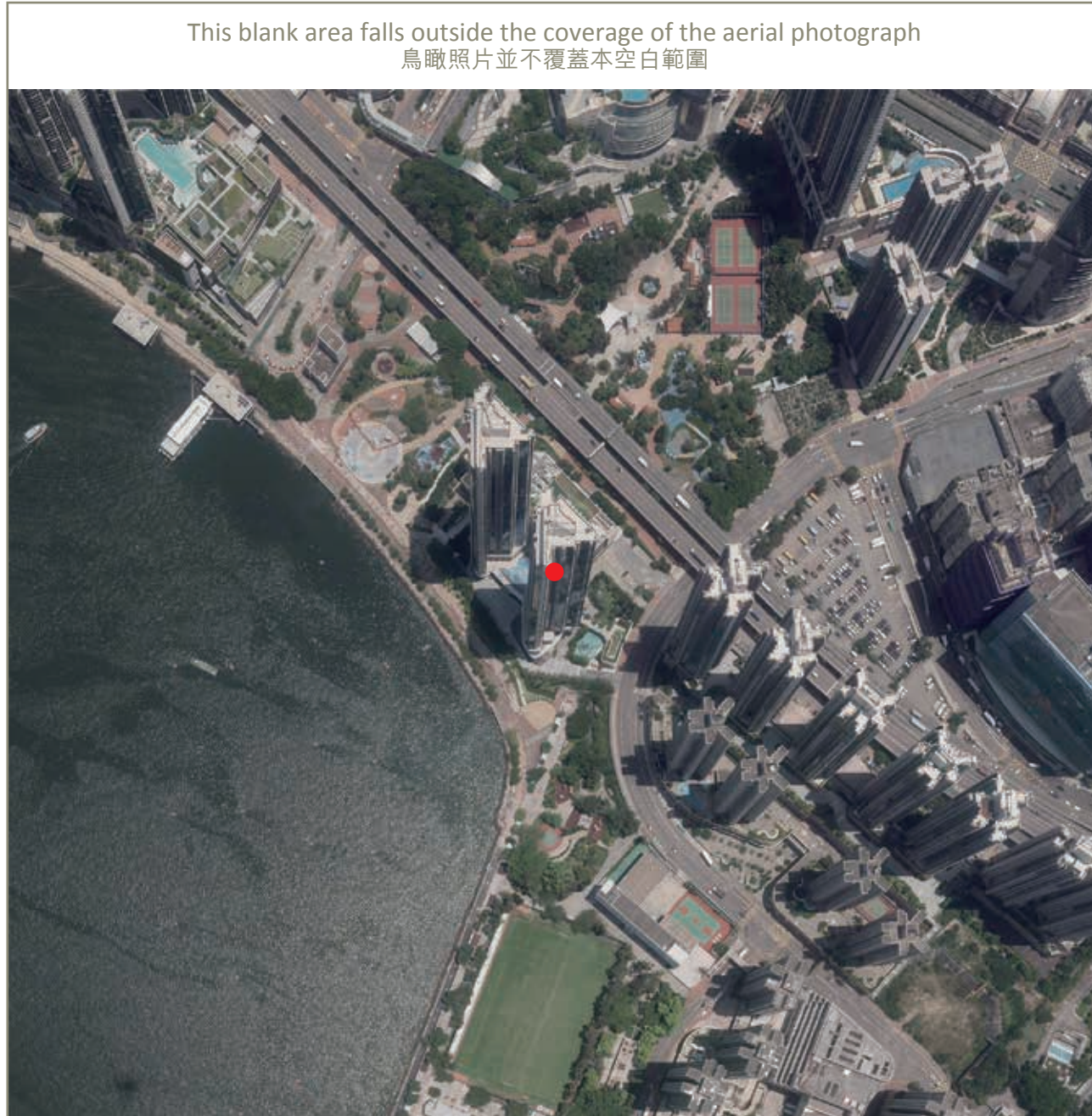


Adopted from part of the aerial photograph taken by the Survey and Mapping Office of Lands Department at a flying height of 3,000 feet, photo No. E100369C, dated 14 July 2020.

摘錄自地政總署測繪處於2020年7月14日在3,000呎飛行高度拍攝之鳥瞰照片，編號為E100369C。



● Location of the Phase of the Development

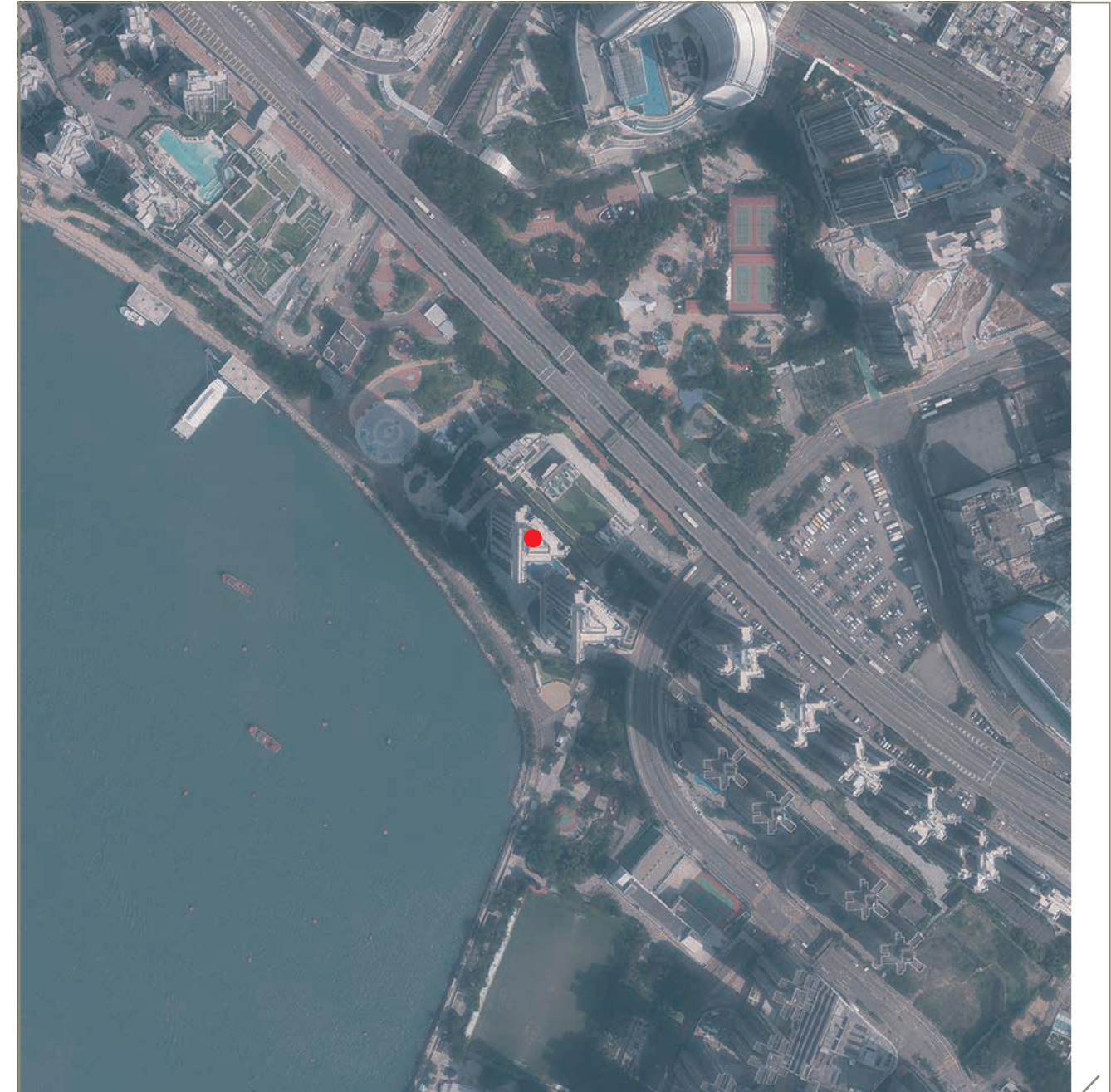
發展項目期數的位置

Remarks :

1. The aerial photographs are available for free inspection during normal office hours at the sales office.
2. Due to technical reasons as a result of the irregular boundary of the Phase of the Development, the aerial photographs have shown more than the area required under the Residential Properties (First-hand Sales) Ordinance.
3. Survey and Mapping Office, Lands Department, The Government of the HKSAR © Copyright reserved - reproduction by permission only.

Adopted from part of the aerial photograph taken by the Survey and Mapping Office of Lands Department at a flying height of 6,900 feet, photo No. E068929C, dated 1 October 2019.

摘錄自地政總署測繪處於2019年10月1日在6,900呎飛行高度拍攝之鳥瞰照片，編號為E068929C。



This blank area falls outside the coverage of the aerial photograph

鳥瞰照片並不覆蓋本空白範圍

備註：

1. 該等鳥瞰照片存於售樓處，於正常辦公時間內供免費查閱。
2. 因發展項目期數的不規則界線引致的技術原因，鳥瞰照片所顯示的範圍多於《一手住宅物業銷售條例》所要求。
3. 香港特別行政區政府地政總署測繪處©版權所有，未經許可，不得複製。



Adopted from part of the aerial photograph taken by the Survey and Mapping Office of Lands Department at a flying height of 6,900 feet, photo No. E068928C, dated 1 October 2019.

摘錄自地政總署測繪處於2019年10月1日在6,900呎飛行高度拍攝之鳥瞰照片，編號為E068928C。



● Location of the Phase of the Development

發展項目期數的位置

Remarks :

1. The aerial photograph is available for free inspection during normal office hours at the sales office.
2. Due to technical reasons as a result of the irregular boundary of the Phase of the Development, the aerial photograph has shown more than the area required under the Residential Properties (First-hand Sales) Ordinance.
3. Survey and Mapping Office, Lands Department, The Government of the HKSAR © Copyright reserved - reproduction by permission only.